

TEST CONDITIONS

Test Date	10/6/2020
Test Conductor	jwipp
Boat Weight as Tested (lbs)	3600
Air Temperature (degrees F)	75
Elevation (ft)	702.0997375
Sea State	Calm
Wind Velocity range (mph)	5
Fresh/Salt Water	Freshwater
Fuel Level at Testing (gal)	30

ENGINE SPECIFICATIONS

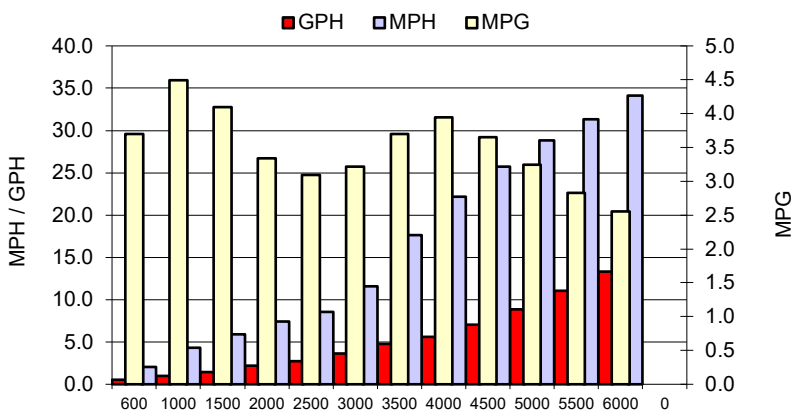
Number of Engines	1
Engine	V6 ProXS
Horsepower	175
Cylinders	6
Drive or gear model and ratio	Standard 1.85
Mounting Bolt Hole	3
Engine Height (in)	--
Engine Setback (in)	0
Engine Length (in)	25

PERFORMANCE SUMMARY

Top Speed (mph @ rpm)	34.6	6135
Acceleration 0 - 20 mph (seconds)	2.95	
Acceleration 0 - 30 mph (seconds)	5.22	

PROPELLER SPECIFICATIONS

Mercury Name	Enertia
Material	Stainless Steel
Pitch	11
Number of Blades	3

PERFORMANCE CURVE

BOAT SPECIFICATIONS

Region/s sold	
Manufacturer	Bayliner
Website	Bayliner.com
Boat Model	Trophy T20 CX
Boat Type	Center Console
Material	Fiberglass
Length (ft)	20' 5"
Beam (ft)	8
Max hp Capacity	200
Fuel Tank Capacity (gal)	55
Steering Type	Hydraulic Steering
Dry Boat Weight (lbs)	3250

PERFORMANCE DATA

RPM	SPEED	FUEL CONSUMPTION	FUEL CONSUMPTION	RANGE
RANGE	MPH	GPH	MPG	MILES
600	2.1	0.6	3.7	203
1000	4.3	1.0	4.5	247
1500	5.9	1.4	4.1	226
2000	7.4	2.2	3.3	184
2500	8.5	2.8	3.1	170
3000	11.6	3.6	3.2	177
3500	17.6	4.8	3.7	204
4000	22.2	5.6	3.9	217
4500	25.7	7.0	3.7	201
5000	28.8	8.9	3.2	179
5500	31.3	11.1	2.8	156
6000	34.1	13.3	2.6	141
0	0.0	0.0	0.0	0
0	0.0	0.0	0.0	0

