

TEST CONDITIONS

Test Date	10/6/2020
Test Conductor	jwipp
Boat Weight as Tested (lbs)	4400
Air Temperature (degrees F)	75
Elevation (ft)	715.2230971
Sea State	Calm
Wind Velocity range (mph)	5
Fresh/Salt Water	Freshwater
Fuel Level at Testing (gal)	40

ENGINE SPECIFICATIONS

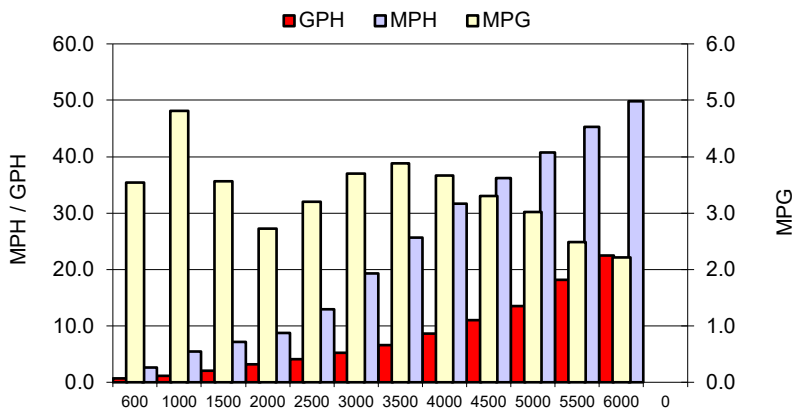
Number of Engines	1
Engine	V8 FourStroke
Horsepower	250
Cylinders	8
Drive or gear model and ratio	Standard 1.75
Mounting Bolt Hole	3
Engine Height (in)	25
Engine Setback (in)	0
Engine Length (in)	25

PERFORMANCE SUMMARY

Top Speed (mph @ rpm)	49.8	6024
Acceleration 0 - 20 mph (seconds)	3.21	
Acceleration 0 - 30 mph (seconds)	5.08	

PROPELLER SPECIFICATIONS

Mercury Name	Enertia
Material	Stainless Steel
Pitch	16
Number of Blades	3

PERFORMANCE CURVE

BOAT SPECIFICATIONS

Region/s sold	
Manufacturer	Bayliner
Website	Bayliner.com
Boat Model	Trophy T22 CC
Boat Type	Freshwater Fish
Material	Fiberglass.
Length (ft)	22' 7"
Beam (ft)	8' 6"
Max hp Capacity	300
Fuel Tank Capacity (gal)	65
Steering Type	Power Steering
Dry Boat Weight (lbs)	4000

PERFORMANCE DATA

RPM	SPEED	FUEL CONSUMPTION	FUEL CONSUMPTION	RANGE
RANGE	MPH	GPH	MPG	MILES
600	2.6	0.7	3.5	231
1000	5.4	1.1	4.8	313
1500	7.2	2.0	3.6	231
2000	8.7	3.2	2.7	177
2500	12.9	4.1	3.2	208
3000	19.3	5.2	3.7	240
3500	25.7	6.6	3.9	252
4000	31.7	8.6	3.7	238
4500	36.2	11.0	3.3	215
5000	40.8	13.5	3.0	197
5500	45.2	18.2	2.5	161
6000	49.8	22.5	2.2	144
0	0.0	0.0	0.0	0
0	0.0	0.0	0.0	0

